

Younglin Application Note

REF No. : YL-APP-986012

Subject : Quinone Analysis Extracted from a Living Body

Key Words
: Quinone, HPLC



Introduction

HPLC is used for the analysis of Isoprenoid Quinone consisting of *Leclercia adecaboxylata* KCTC 1036^T. *Leclercia adecaboxylata* is consisted of Ubiquinone and Menaquinone and their constitutional ratio is important to identify *Leclercia* Strain.

Instrument

- Younlin 9600 HPLC With Autochro-WIN

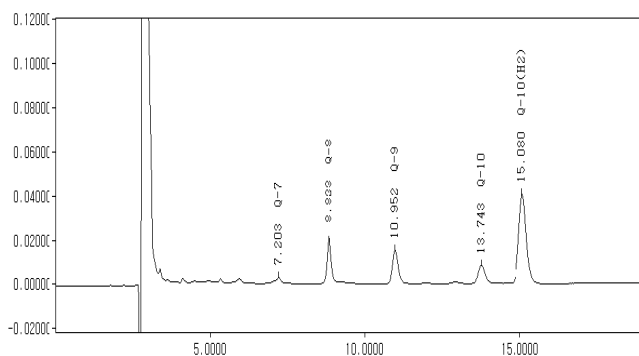
Analytical Conditions

- Mobil Phase(Isocratic) : Methanol:Isopropylether=3:1
- Injector : Rheodyne Injector(Loop=20µl)
- Pump : Younglin M930
- Detector : Younglin M720(275nm)
- Column : Hitachi YMC-Pack ODS-AM (250 x 4.6 mm, 120µm)
- Flow rate : 1ml/min

Sample : 5 Quinones

Quinone	RT
Q-7	7.203
Q-8	8.888
Q-9	10.952
Q-10	13.743
Q-10(H2)	15.080

Chromatogram



Discussion

5 quinones extracted from a living body were analyzed with HPLC and the results helped to study *Leclercia* Profile.